

MEMORANDUM

DATE: December 18, 2008  
TO: Regional File  
FROM: Karen Katamay, DWPC/FOS – Des Plaines  
SUBJECT: Super Mix Inc. – Spring Grove, IL  
NPDES No. ILR006479

cc: DWPC/CAS  
DWPC/RU  
DPWS/FOS - Elgin

---

On November 12, 2008, an industrial stormwater site inspection was conducted at the subject property. The inspection was conducted as the result of a referral from the McHenry County SWCD about contaminated runoff from the property. Accompanying me on the inspection was Tom Mattingly of the McHenry County SWCD. The facility is located at 2203 Spring Ridge Drive in Spring Grove, IL.

The site has their truck washout area near the front edge of the property (northwest corner) and allows the runoff from the washout area to go to a settling basin that is located in the road ditch for Spring Ridge Drive. This settling basin is located outside of the property's fence line and is able to overflow to the road ditch. The flow path of this discharge was followed and deposits from the wash water were shown to travel well beyond the facility and also across the street to the north road ditch and into a storm sewer catch basin.

Photos showing the flow path and the wash water deposits in the road ditch are attached to this report. Also attached is a groundwater recharge map, indicating that this industry is located in a sensitive recharge area (industry location is indicated by the black rectangle). The facility is also located close to a village well house and water tower.

The discharge of contaminated wash water is in violation of their NPDES general storm permit for industrial sites as well as the Illinois Rules and Regulations.

Ecc: Kristy Hecke, McHenry County Department of Health  
Tom Rivera, IEPA – BOL  
Tom Mattingly, McHenry County SWCD

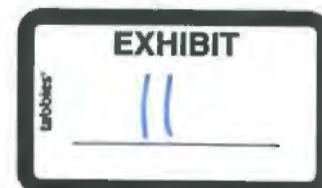




Photo 1 – Settling pond for concrete truck wash water adjacent to Spring Ridge Drive





Photo 2 – Flow path of contaminated water to west through the road ditch





Photo 3 – Flow path continuing to the west through the ditch





Photo 4 – Flow continues through the ditch behind the brush







Photo 5 – Continuance of flow through the ditch line behind the brush





Photo 6 – Flow enters the culvert at this point and goes north under the road. Note deposits in culvert that are the same color as the wash water in the settling basin.





Photo 7 – Culvert exit on north side of road. Note the deposits on the pipe wall and rocks that are the same color as the wash water in the basin.





Photo 8 – Road ditch on north side of street with deposits on rocks.







Photo 9 – Flow path continuing east showing deposits entering culvert under driveway





Photo 10 – Close up of culvert entrance





Photo 11 – Culvert exit on other side of driveway showing murky water and deposits on stones





Photo 12 - Flow continuing east with deposits on stones







Photo 13 – Close up photo showing the deposits on the stones.





Photo 14 – Next culvert, filling with deposits



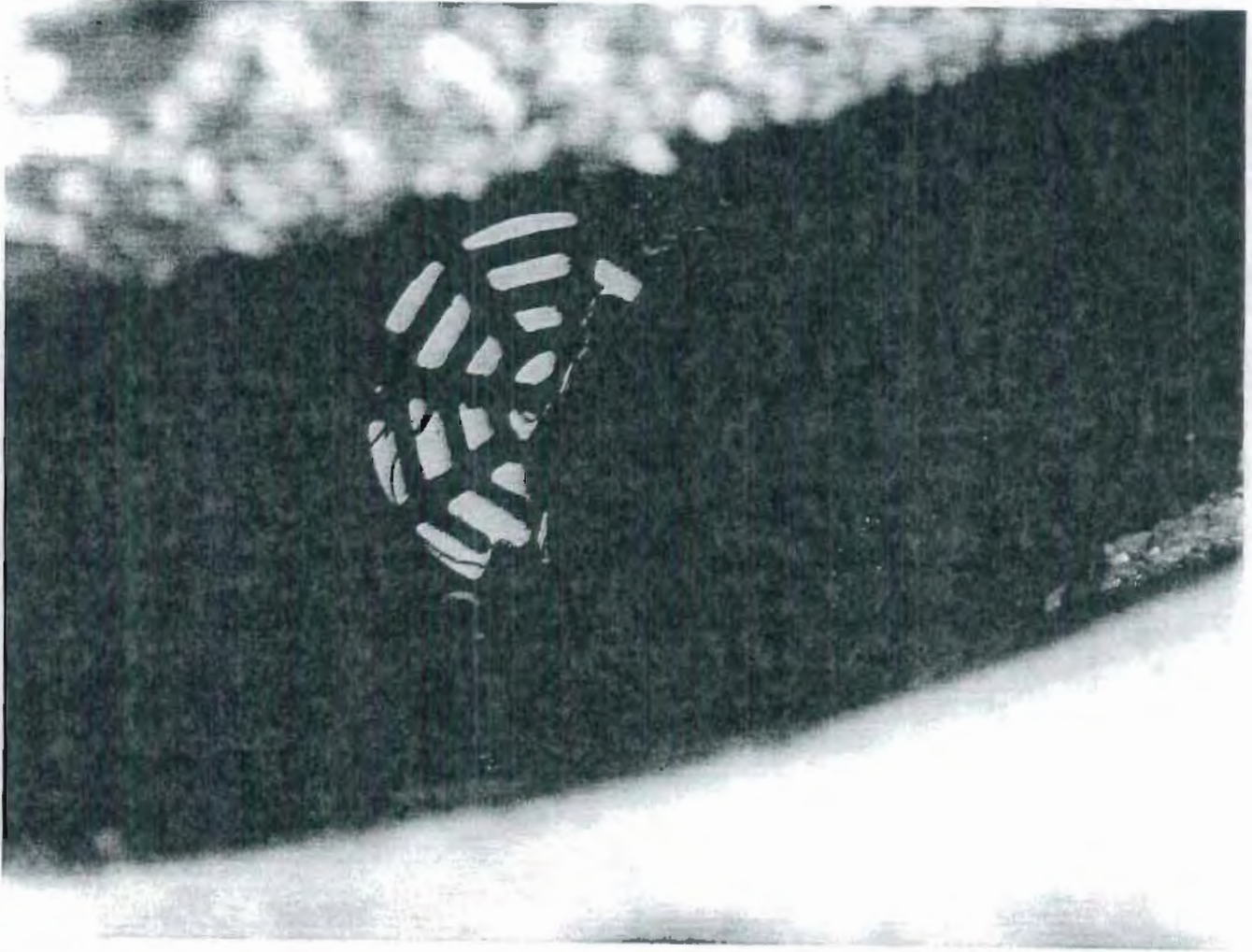


Photo 15 – Flow then enters a storm sewer catch basin. Photo is looking at sediments inside the catch basin.



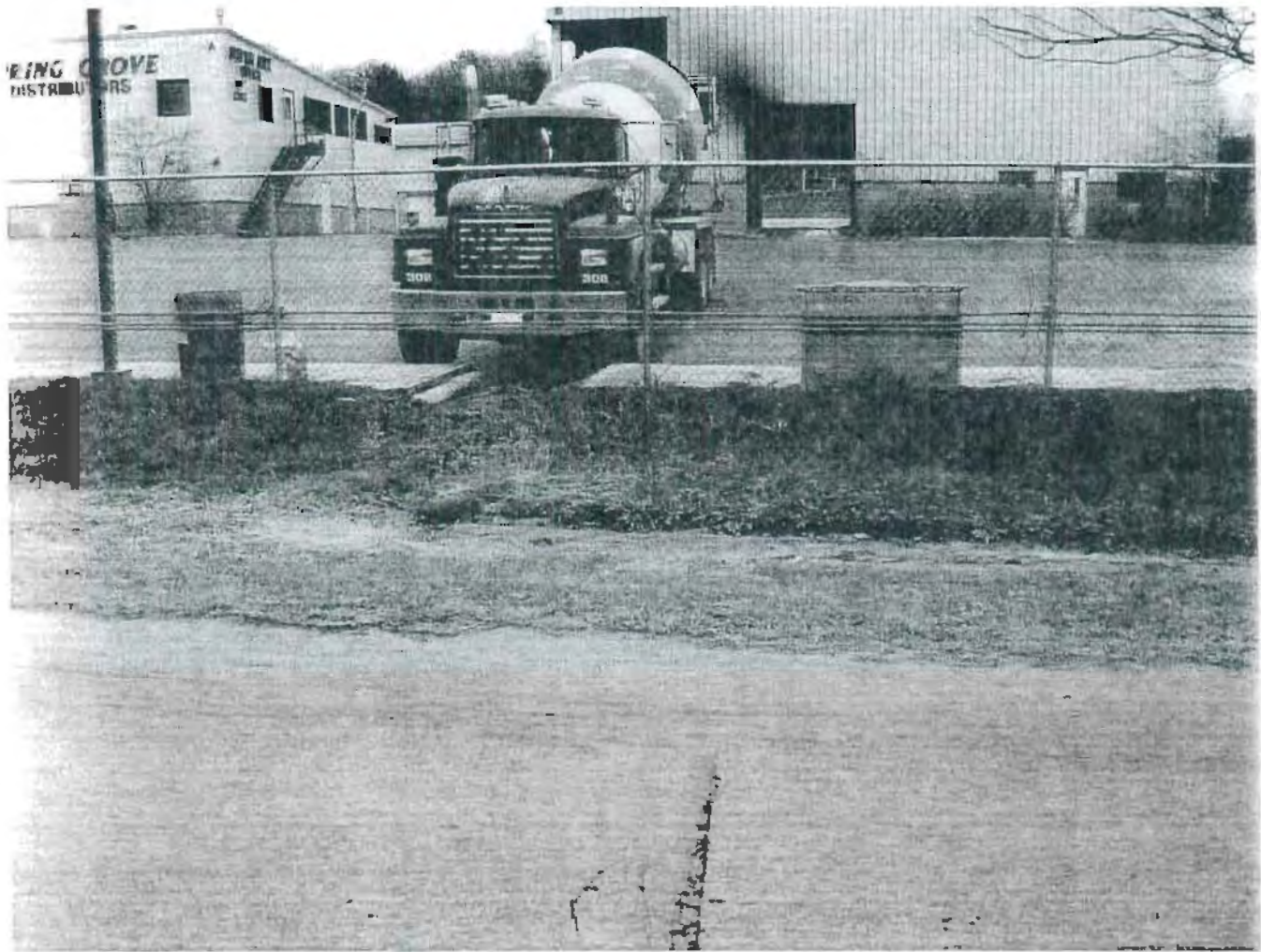


Photo 16 – Looking south again at the Super Mix property. Note how runoff from the parking lot is directed to the road ditch.







Photo 17 – Following road ditch west, showing another discharge point and the deposits in the ditch.





Photo 18 – Concrete truck wash out area on northeast corner of property near facility exit.





Photo 19 – shows how flow is able to run off the property from the wash area into the settling basin in the road ditch.

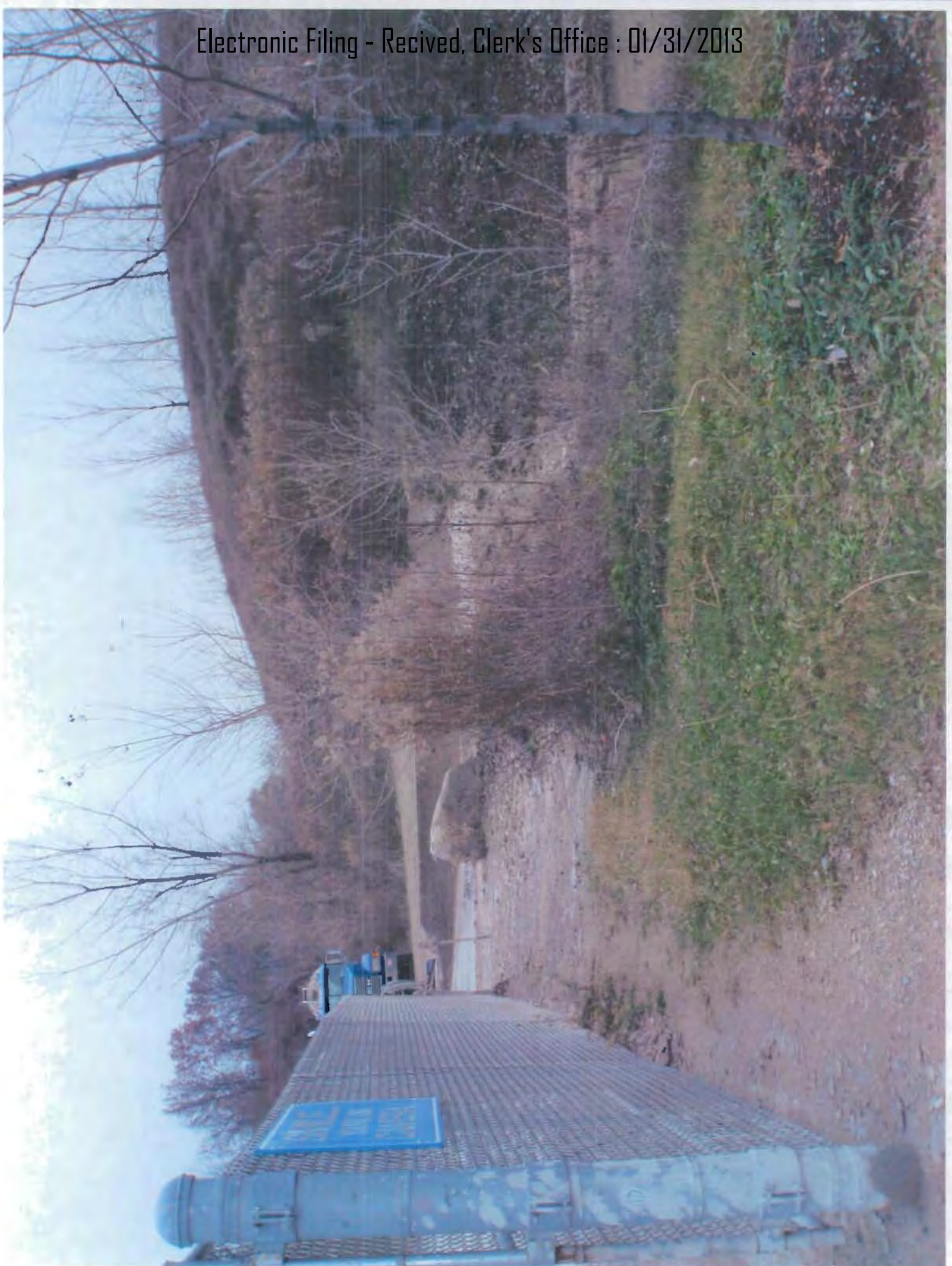




Photo 20 – indication that the basin may have been recently excavated to remove deposit build-up.





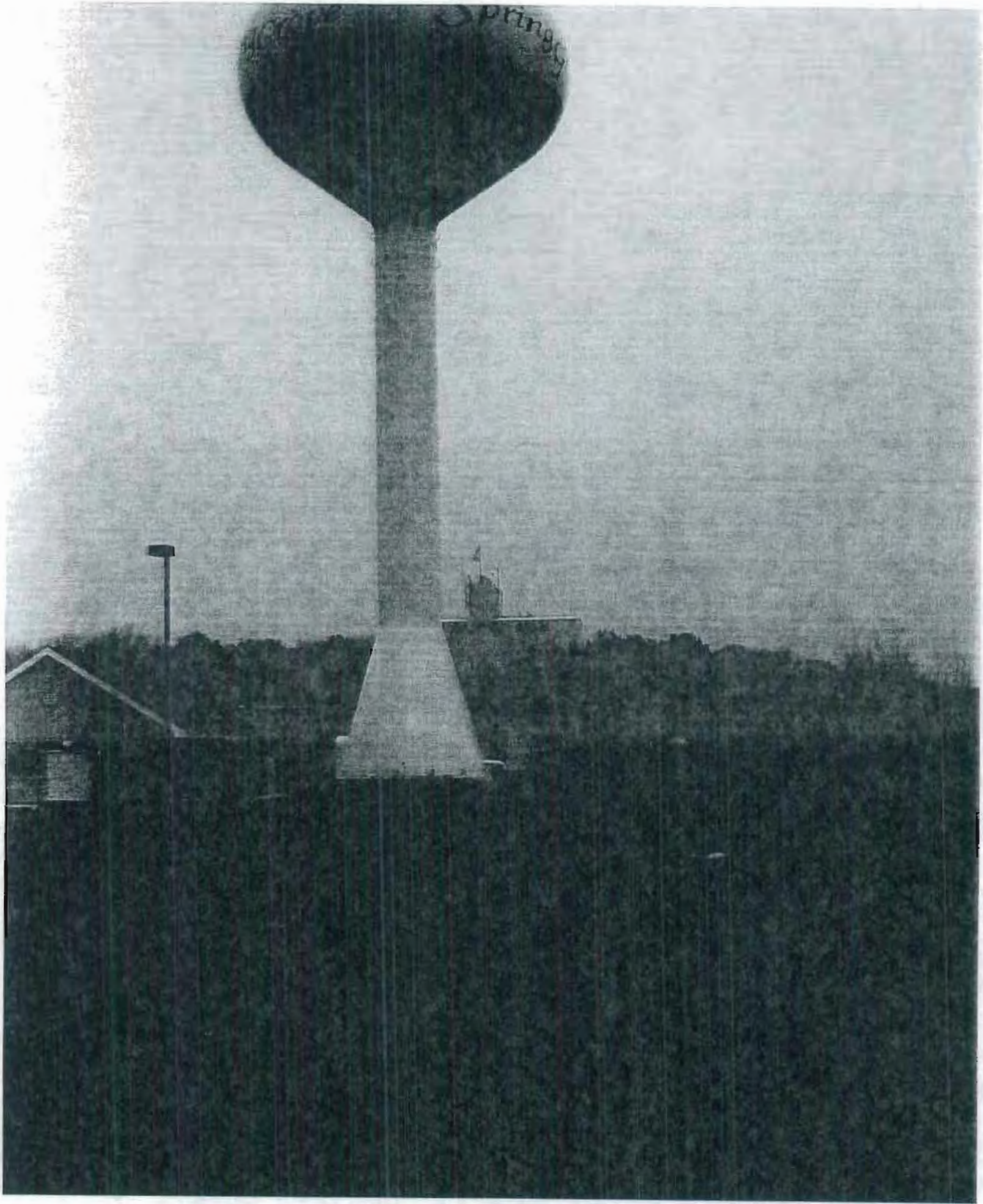
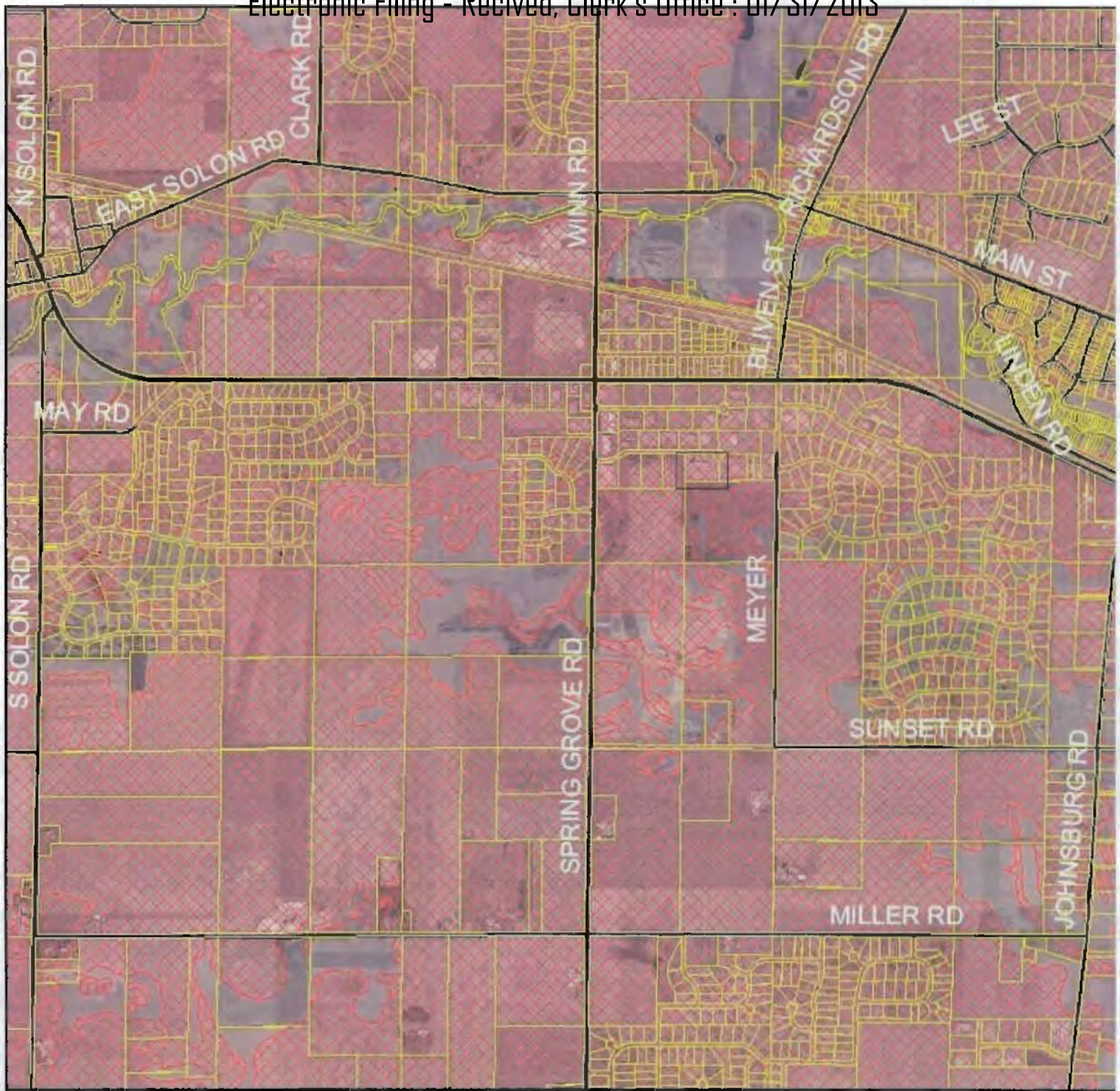


Photo 21 – Proximity of industry to the village's well house and water tower.





0 700 1,400 2,800 4,200 5,600 Feet

2005 Aerial Photograph  
Produced By: McHenry County Soil & Water Conservation District



**Sensitive Recharge**

-  Parcel Boundaries
-  Roads
-  Sensitive Recharge Areas